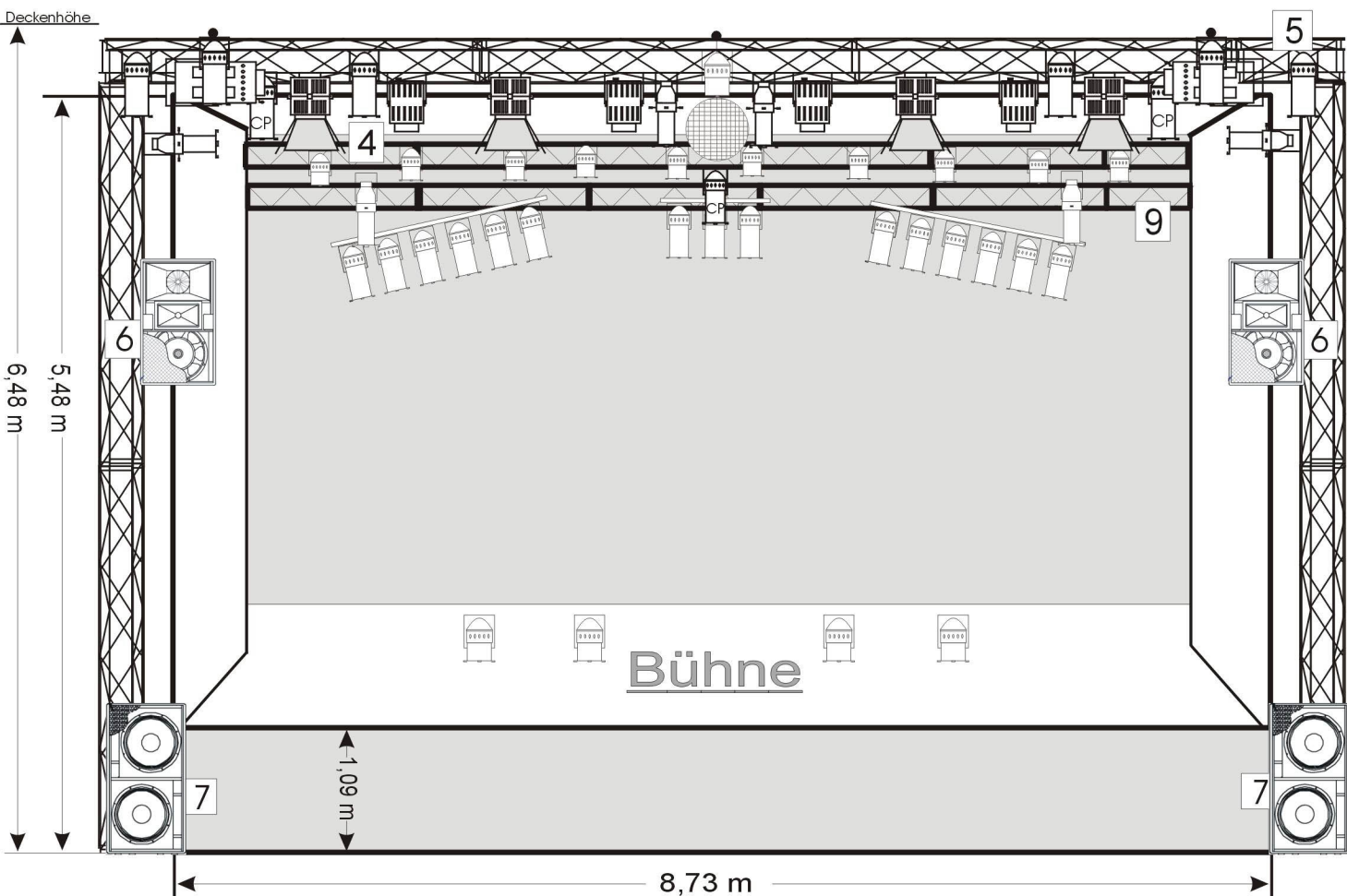
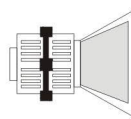


Bühnenplan HdJ Osnabrück Großer Saal

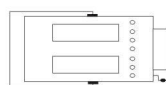
Sicht von vorn



- 1 Bühnenaufgang
- 2 Backstage
(im Keller)
- 3 Stromversorgung
1 x CEE (3~63A)
(ohne Fi !!)
1 x CEE (3~32A)
1 x CEE (3~16A)
DMX-Verbindung
- 4 Dreipunkttraverse
- 5 Vierpunkttraverse
- 6 EAW Topteile Kf 650e
- 7 EAW Bass LA128
- 8 Bühnenvorhang elektr.
- 9 Traverse verschiebar



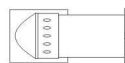
Desisti fresnel 2 kw
mit Torblenden



Linsenscheinwerfer
2 kw (Spiegelball)



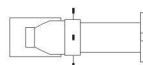
Linsenscheinwerfer
1 kw fokussierbar



PAR 64
500W Raylights



PAR 64
1000W CP 62



Leko 1000W
(6 x 16)



PAR 64 short nose
500W Raylights

Lichtpult ZERO 88 XLS
24 Kanal (48 Dimmer
kanäle über DMX)